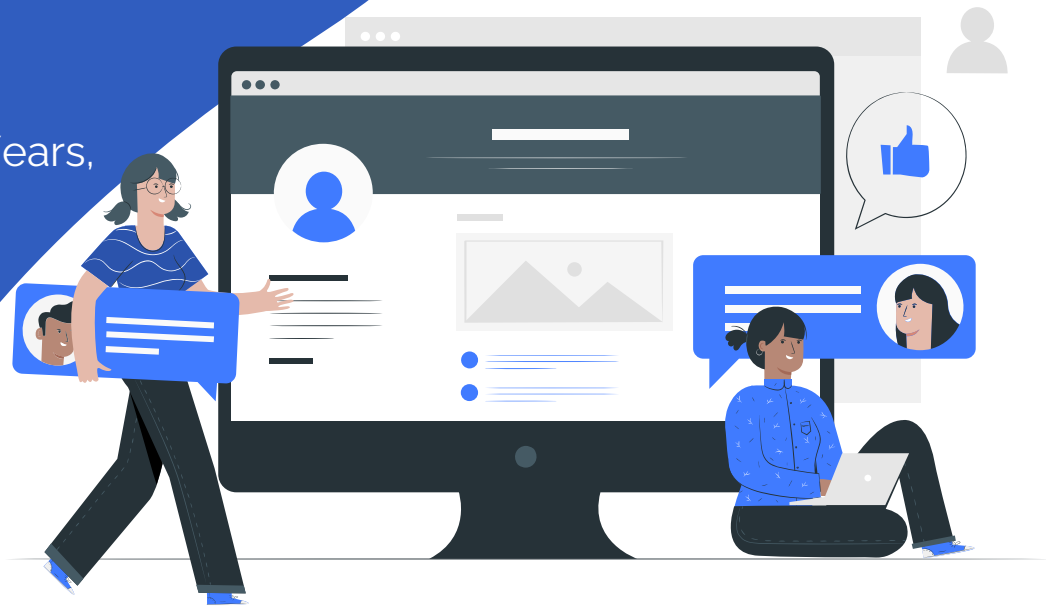


Camau

Welsh Language course for Early Years,
Childcare and Playwork sector



An illustration of a man and a woman standing close together. The woman, on the left, has long dark hair and is wearing a blue patterned top and black pants. She is whispering to the man on her right, who has a beard and is wearing a blue striped shirt and black pants. They are surrounded by a network of grey circles, each containing a person icon, connected by thin lines. A speech bubble with three dots is above the woman. In the bottom left corner, there is a small potted plant with blue leaves. In the bottom right corner, there is a large, light grey leaf shape.

- **Approximately 20 hours of independent learning;**
- **Learn Welsh to use with children in settings;**
- **Pronouncing the alphabet, colours, days of the week and numbering;**
- **Learn commands and introduce prepositions.**



Useful Links



[https://learnwelsh.cymru/
work-welsh/camau/](https://learnwelsh.cymru/work-welsh/camau/)



<https://www.cwlwm.org.uk/>

