

CWLWM NEWSLETTER – AUTUMN 2018



CONTENTS:

1. Childcare Offer

.....

2. Workforce Development and Training

.....

3. Business Support

.....

4. Care inspectorate Wales (CIW)

.....

5. Additional Learning Needs (Wales) Act 2018

.....

6. 'Cymraeg 2050': Welsh Language Strategy

.....

7. Wooden Pallet Safety Information



1 Childcare Offer

Childcare Offer Capital Grant Programme

The Welsh Government has announced £60 million funding for 2018-2021 to support the growth and sustainability of the Childcare and Early Years sector through a [Childcare Offer Capital Grant Programme](#). Cwlwm partners are working closely with Local Authorities who will be submitting an application to this programme by 28th September to ensure the needs of the sector are considered and to support the wider objectives of the programme. We will be sharing any relevant information with providers as this is confirmed.

Early Implementation of the Childcare Offer for Wales

Seven local authorities have been working with the Welsh Government to deliver the Childcare Offer for Wales since September 2017, and the Minister for Children, Older People and Social Care recently announced that further seven authorities will begin delivering the offer from September 2018. Further details can be found on the Welsh Government webpages:

<https://gov.wales/topics/people-and-communities/people/children-and-young-people/childcare/talk-childcare/pilot-areas/?lang=en>

To learn more about the early implementation of the offer, a detailed FAQ document has been published for childcare providers:

<https://gov.wales/topics/people-and-communities/people/children-and-young-people/childcare/talk-childcare/information-for-providers/?lang=en>

Please visit the Welsh Government's new 'Childcare Offer for Wales' Facebook page for further information and to keep up to date with the latest developments of the Childcare Offer for Wales:

<https://www.facebook.com/The-Childcare-Offer-for-Wales-Cynnig-Gofal-Plant-Cymru-763836314003872>



Talk Childcare Campaign

As the Childcare Offer for Wales expands and grows, Welsh Government is keen to hear the views of providers on how the offer is developing and being implemented. Providers can share any thoughts they have on this by emailing Welsh Government through TalkChildCare@gov.wales

Cwlwm partner organisations are also keen to hear the views of providers. You can contact us through our usual e-mail channels or on Facebook / Twitter.

2 Workforce development and training

Childcare Qualifications in Wales

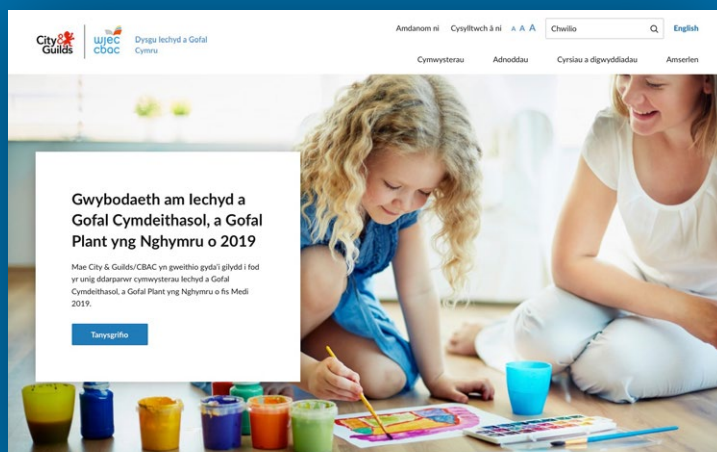
In November 2016, Qualifications Wales published a proposal to develop new Health and Social Care, and Early Years Childcare qualifications, thus leading a process to streamline skills and raise standards across the sectors. After a robust tendering process, Qualifications Wales awarded City & Guilds and WJEC the contract to develop the new suite of qualifications covering levels 1 – 5, and featuring clear progression routes for learners to both employment and further study.

From September 2019, City & Guilds/WJEC acting as a consortia will be the sole awarding body of a new suite of fundable Health and Social Care, Childcare qualifications in Wales, which will replace the current Children’s Care, Learning and Development (CCLD) for new learners.

Representatives from Cwlwm partners have been working with all concerned to help develop the new suite of qualifications which will be known as CCPLD – Childcare, Play, Learning and Development, for the Early Years, Childcare and Play sector.

For further up to date information on the development of the new qualifications, please refer to the combined consortium’s website at:

www.healthandcarelearning.wales



The website is regularly refreshed and will contain links to consultations on various aspects of the developing qualifications. Please visit the site on a regular basis so that you can be kept informed of developments and have an opportunity to participate in appropriate consultations.

Other information relating to the development of the qualifications can be found by visiting the Qualifications Wales website at:

<http://www.qualificationswales.org/english/>

New qualification requirements

The Welsh Government released a Circular Letter in September 2017 which sets out the qualification requirements for settings along with a deadline for obtaining these of September 2021. Please note the requirement for registered childminders has not changed.

<https://gov.wales/topics/people-and-communities/people/children-and-young-people/childcare/regulation/?lang=en>

Playwork Qualifications

Playwork Qualifications for those working within the Out of School Childcare sector in Wales have a limited life, with registrations to the current qualifications only being accepted until 31.08.19. Cwlwm partners are working with Awarding Bodies to ensure that Playwork qualifications in Wales are updated in line with the new National Occupational Standards and their life extended to ensure that providers who offer Out of School provision can meet the regulations by September 2021.

In July, Clybiau Plant Cymru Kids' Clubs held information events across Wales for employers and potential learners to find out the answers to their questions around qualification requirements. They will be putting together a frequently asked questions document following these events to support all Out of School Childcare settings, this will be made available via [Cwlwm website](#).

3 Business Support

As highlighted in the Welsh Government’s Childcare, Play and Early Years Workforce Plan, Cwlwm alongside Business Wales plays an integral part in the key theme ‘Investing in Building Capacity and Capability’.

The workforce plan outlines that the Welsh Government will “work with CWLWM and Business Wales to make the best use of expertise that they provide, and utilise CWLWM’s experience in providing advice to childcare providers around regulatory and governance arrangements.”

**Busnes
Cymru**

**Business
Wales**



<https://gov.wales/docs/dsjlg/publications/cyp/171215-child-care-play-early-years-workforce-plan-en.pdf>

Cwlwm will be working with Local Authorities and Business Wales to analyse support available to provide the sector with a better understanding of the business support landscape available to them, enabling providers to know who to approach for support in their Local Authority area. Business Wales provides tailored, impartial, independent support and advice to people, starting, running and growing a business in Wales. With regional centres across Wales, they offer a mixture of online and face-to-face support, workshops, specialist advisors and mentors. In addition to working with childcare providers on a business diagnostic and action plan, advisors can also provide targeted financial advice and access to an on-line financial tool-kit that settings may find useful.

View the Business Wales website for further information:

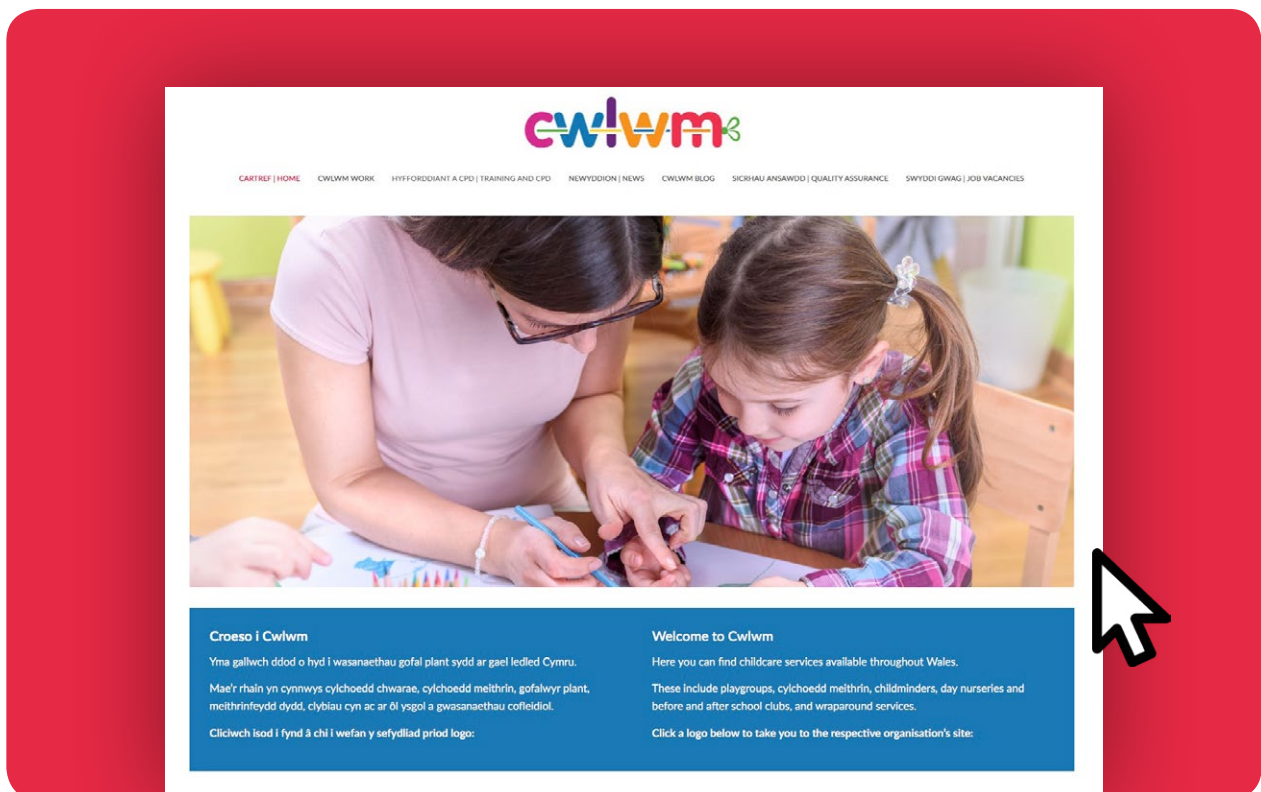
<https://businesswales.gov.wales/>

Business Wales is offering a childcare grant to childminders, nurseries, Cylch Meithrin, out of school childcare clubs and playgroup settings in the private, social and voluntary sectors. The purpose of the grant is to encourage the creation of new childcare places (Level 1 funding of £500) and new places for children with additional or special needs (Level 2 funding of £1000) to support the Welsh Government’s 30 Hour Childcare Offer. For further details on the guidance, criteria and application form please speak with your local Business Wales team, call the helpline on 03000 6 03000 or email businesssupport@gov.wales. Live chat is also available on www.business.wales.gov.uk

Alternatively, you can write to the Childcare Grant Administrator, Business Wales, Bocam Park, Unit 14/15 Oldfield Road, Pencoed, Bridgend CF35 5LJ

There is a wealth of information shared with the sector via the [Cwlwm website](#) and social media pages to support you in delivering your business/es.

For further information on the business support available contact your umbrella organisation.



4 Care inspectorate Wales (CIW)

Inspections

From early 2019, inspection ratings will be published by Care Inspectorate Wales (CIW) when they inspect Childcare and Play services. Silent ratings were originally introduced in 2016 and CIW will be publishing ratings for all day care services who have received a silent rating and for newly registered services. CIW have produced an [Inspection Guide for Providers](#) which explains the ratings in detail.

A rating of **Excellent, Good, Adequate or Poor**, will be awarded against each of the four inspection themes on the [Inspection Framework](#):

1. Well-being

2. Care and Development

3. Environment

4. Leadership and Management

It will be important, in future, for providers to be able to demonstrate what improvements they have made as a consequence of the ratings received.

Joint inspection with Estyn

Following the pilots, work is underway to prepare for joint inspections between Estyn, and Care Inspectorate Wales for the non-maintained sector (that are in receipt of Foundation Phase nursery funding).

For more information on the joint inspection framework please visit

<https://www.estyn.gov.wales/new-inspection-framework-non-maintained-nursery-settings>

5 Additional Learning Needs and Education Tribunal (Wales) Act 2018

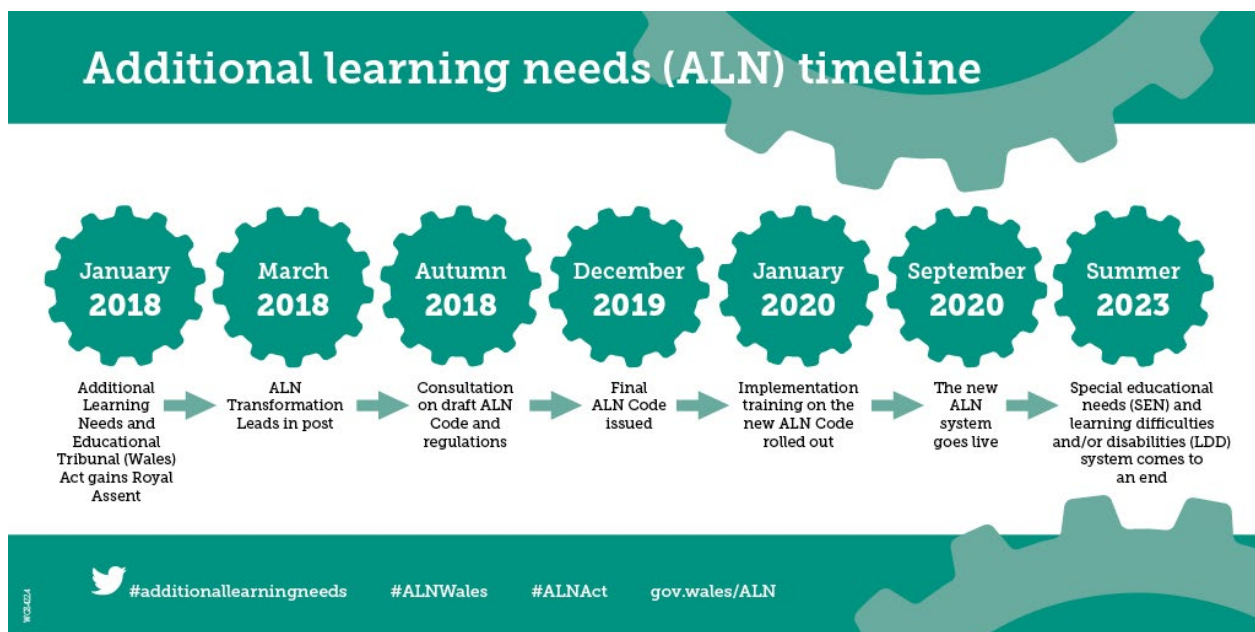
The Welsh Government is currently planning the implementation of the Additional Learning Needs and Education Tribunal (Wales) Act 2018. The new additional learning needs (ALN) system is expected to be implemented over a three year period from September 2020.

The Welsh Government has published [a guide to timeframes for implementation of individual learning plans](#). During the first year of operating, 2020-2021 it is expected that individual development plans will be used for 2-3 year olds and 3-4 year olds in the non-maintained sector. These are the responsibility of Local Authorities. Until the new law comes into force, Local Authorities must ensure that they continue to comply with their duties in accordance with the 1996 Education Act and the SEN Code of Practice for Wales.

The Government has now appointed a small team of Additional Learning Needs (ALN) transformation leads. It will be these individuals who will be responsible for supporting the effective implementation of the Additional Learning Needs and Education Tribunal (Wales) Act 2018 across Wales. There are five transformation leads and four of these are regional leads. They are responsible for supporting local authorities, schools, Early Years settings and local health boards to prepare for and implement the new system. One transition lead in further education is responsible for providing the same support for the further education sector.

- Tracey Pead will remain in South East Wales after the lead of the Pupil Support team in Torfaen County Borough Council;
- Liz Jones, former Principal Educational Psychologist from Blaenau Gwent, will continue to work in the Mid-East region;
- Huw Davies, a former Estyn inspector, will be working in the West region;
- Margaret Davies, former Estyn inspector, will work in the North region;
- Chris Denham will take on the role of a Further Education transformation leader after working to Coleg Gwent in the field of Additional Learning Needs.

The Act also created a new statutory role called ‘Early Years Additional Learning Needs Lead Officer’ and the explanatory memorandum states that ‘local authorities will be required to appoint an Early Years ALN Lead Officer to coordinate its functions in relation to children under compulsory school age who are not yet in a maintained setting. These roles will help to facilitate effective multi-agency collaboration to improve services for learners’. It is expected that these posts will be appointed by 2021 although there is currently a discussion about where these posts will be located and different models are likely to be piloted before 2021. The ALN Code, which is currently being developed by the Welsh Government, will include specific guidance relating to the Early Years ALN Lead Officer role. The draft ALN Code is expected to be made available for public consultation during the autumn term. See this graphic from Welsh Government on the ALN timeline:





6 Cymraeg 2050: Welsh Language Strategy

Cymraeg 2050 outlines Welsh Government's ambitious plan to see the number of people able to enjoy speaking and using Welsh reach a million by 2050.

The Welsh Language Strategy recognises the importance of the Childcare sector noting that:

“Welsh language and Welsh-medium training for Early Years practitioners will be provided by means of several programmes. Since increasing Welsh-medium early years childcare provision is essential to our aim of achieving a million speakers, we need to ensure a coordinated plan to develop this important workforce”.

<https://gov.wales/docs/dcells/publications/170711-welsh-language-strategy-eng.pdf>

Welsh Government Cymraeg 2050 Action plan for 2018-2019 highlights that later on in 2018/19, all childcare providers will be able to access a new series of courses being developed by the National Centre for Learning Welsh. These courses will be tailored to the needs of the Early Years, Childcare and Play sector, and the Welsh-language skill checker (for Childcare, Early Years and Playwork), the ‘gwiriwr’, will be instrumental in ensuring practitioners are offered training appropriate to their needs.



You may recall being sent information from your umbrella organisation about the EDI project. Thank you very much to all those who gave us your time and contributed to this. The ‘gwiriwr’, as it is now officially called, is the second phase of the project, based on responses to four on-line quizzes. These quizzes aim to take the guesswork out of choosing courses, by giving you an idea of how your Welsh language skills map against the Welsh for Adults descriptions and to relevant training.

Once again, the success of the project relies on your participation and willingness to complete the quizzes (so that we can build a picture of the types of support and training to develop and deliver).

If you are interested in completing the quizzes, or you would like more Information, please contact the team on edi@meithrin.cymru or 01970 639639.

7 Wooden Pallet Safety Information

Is a wooden pallet safe to reuse?

Wooden pallets are often used for various craft and DIY activities, but are you aware of the potential hazard caused by pallets treated by Methyl Bromide? As some wooden pallets are used in the first instance for transporting goods across the globe, it is necessary for the wood to be treated to ensure that they don't harbour pests. Some of these methods used pose no danger to humans and these pallets can be reused. Attention should be given to avoid pallets which have been treated with Methyl Bromide.

When choosing a pallet:

- firstly choose a clean pallet as any visible stains may be the result of spillage of products such as oil, food or any type of potentially hazardous substance.
- check for splits, splinters or damages to the wood which might have been caused by nails or fastenings coming loose.
- check the markings. Pallets which are used internationally bear stamps showing how they were treated and the country of manufacture, and it's important to know how to understand what these symbols mean. Most will carry an International Plant Protection Convention (IPPC) mark; this indicates that the pallet is made from wood that's had an approved treatment.



The other markings will show the method of treatment. These can be marked HT for Heat Treated, DB for Debarked, KD for Kiln-dried and MB for Methyl Bromide. Methyl Bromide is a pesticide fumigation process to eliminate any pests in the timber. It is a process which is now banned in several countries and is harmful to humans. Methyl Bromide can enter the body through inhalation, through the skin or the eyes and can cause inflammation, dizziness and pain amongst other symptoms. Particular care should be taken to avoid burning a pallet treated with Methyl Bromide as this will increase the chances of the substance causing harm to humans.

If a pallet has no markings at all, chances are they were meant for use within the UK only and have probably not been treated at all.



Above: Here is an example of a pallet which bears the IPPC mark. CN means that the pallet was made in China. DBMB means the wood has been debarked and treated with Methyl Bromide. Here is a pallet to avoid using for craft or DIY activities.





www.cwlwm.org.uk

The Cwlwm partnership consists of the following organisations:



CLYBIAU PLANT CYMRU KIDS' CLUBS

Bridge House, Station Road, Llanishen, Cardiff CF14 5UW
Tel: 029 2074 1000 E-mail: info@clybiauplantcymru.org



MUDIAD MEITHRIN

Y Ganolfan Integredig, Boulevard de Saint-Brieuc, Aberystwyth, Ceredigion SY23 1PD
Tel: 01970 639639 E-mail: post@meithrin.cymru



NDNA CYMRU

Office 2, Crown House, 11 Well Street, Ruthin, Denbighshire LL15 1AE
Tel: 01824 707823 E-mail: wales@ndna.org.uk



PACEY CYMRU

Room G16, The Maltings, East Tyndall Street, Cardiff CF24 5EZ
Tel: 0845 880 1299 E-mail: paceycymru@pacey.org.uk



Wales Pre-school
Providers Association
Cymdeithas Darparwyr
Cyn-ysgol Cymru

WALES PPA

Unit 1, The Lofts, 9 Hunter Street, Cardiff CF10 5GX
Tel: 029 2045 1242 E-mail: info@walesppa.org