

CWLWM NEWSLETTER – SUMMER TERM 2019



Welcome to the Cwlwm Summer Term Newsletter where you will find the latest useful information for the early years, childcare and play sector.

CONTENTS:

1. Care inspectorate Wales (CIW)

2. Family Information Services (FIS)

3. CAMAU - Welsh Language Learning for the Early Years, Childcare and Playwork Sector

4. Why Play and the importance of Playwork Training

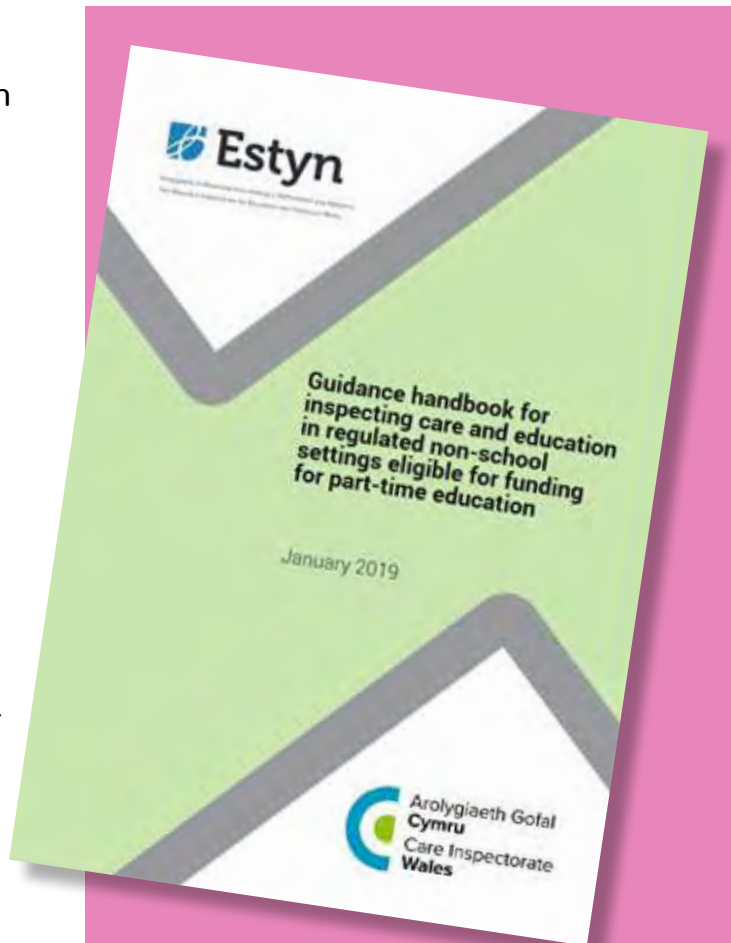
5. WeCare campaign



1 Care Inspectorate Wales (CIW)

Ratings

Since the child care and play team was established in November 2017, it's been a busy time at CIW. We've been preparing for more than two years now to publish ratings in our childcare and play inspection reports. We have talked to childminders and day care providers about ratings at stakeholder events, and also asked the public and Cwlwm members their views on ratings. In May we began to publish the ratings. This is good news for our childcare and play providers and parents and carers, as it means they can see easily our views on the four inspection themes: wellbeing, care and development, environment, and leadership and management. We already publish ratings in our joint inspections with Estyn.



Joint Inspections with Estyn

The joint inspection programme is now well underway, with 49 inspections completed as at the end of May. We are keeping the programme under review and will revise the approach as necessary in the light of the lessons learned. To date, the feedback from the sector has been largely positive with most appreciating the effort to deliver an integrated view of care and education provided to children in non maintained settings that provide an element of funded education.

1 Care Inspectorate Wales (CIW)

What's New?

We have a new code of practice for childcare and play inspection, and this is available on our website for consultation. Inspectors have also received training on the Welsh Government's new guidance on food and nutrition, which childminders and day care providers can find on Welsh Government's website. In addition, inspectors will also be receiving update training on Play in July and we also hope to train a smaller number of inspectors to become 'play champions' for childcare and play inspection.

On line changes

Later in 2019 we will be introducing online registration, variation and notifications for childcare and play, making it easier for new providers to enter the market and for existing services to let us know about any changes to their circumstances. There is much to be gained from this new way of doing things: less paper work, less chance of data loss and a more streamlined approach to registration. Our primary objective in becoming a digital organisation is to make our relationship with providers as efficient and effective as possible.



In addition the development of our online services should assist the implementation of the Welsh Government's Childcare Offer by making it easier for new providers to start up, or for existing providers to refocus their service. At the same time we will continue to expect providers to meet the standards required of them should they wish to be registered with CIW.

We are working with providers to help us design and test the new online system, so that the implementation process is as smooth as possible. Once the new online system for registration, variations and notifications is established, we will move on to issue a new Self-Assessment of Service Statement (SASS) for completion by providers. We plan to do this before the end of 2019.

2 Family Information Services



Families across Wales can now benefit from the launch of an exciting new website! The site, funded by Welsh Government and created by Data Cymru on behalf of the 22 Family Information Services across Wales, provides up to date information about the range of childcare and family support services available for each local authority area.

Utilising the Dewis Cymru resource directory, the new site allows parents to find childcare services in their area by searching for the type of service and the facilities they are looking for, including things like school pickup, current vacancy status and language preference.

Richard Palmer, Assistant Director at Data Cymru who lead on the development work said “as a new parent, it’s been great to lead the development of the new website. It makes finding the right local childcare services so much easier, with all of the information in one place”. The site also signposts to local Family Information Services, with web links and contact numbers, so parents can access direct local support if they need it.

Childcare providers simply need to keep their information in Dewis Cymru up to date to appear in the new website. You can find the site at www.fis.wales

3 CAMAU - Welsh Language Learning for the Early Years, Childcare and Playwork Sector

A new scheme to help workers in the early years, childcare and playwork sector to learn Welsh and improve their language skills was launched at the Urdd Eisteddfod in Cardiff on 28th May by the Minister with responsibility for the Welsh language, Eluned Morgan AM.

The 'Camau' scheme, devised by the National Centre for Learning Welsh, will enable practitioners in the sector to use more of the Welsh language with children in order to give them a good start on their journey towards becoming

fluent Welsh speakers. It will also help practitioners to respond more effectively to the Welsh Government's proposed new curriculum, the requirements of the Foundation Phase and support them in meeting the Active Offer.

The Centre decided to give this sector some priority as research shows that language acquisition occurs quickly and naturally with young children. With the Welsh Government's commitment to create a million Welsh speakers by 2050 and to provide 30 hours a week of free early education and childcare for working parents, the launch of an exciting scheme like this is very timely.



3 CAMAU - Welsh Language Learning for the Early Years, Childcare and Playwork Sector

It is expected that 350 practitioners will attend face-to-face training in Welsh over the next year with 20 hour courses available at various levels of fluency and using different delivery models across the whole of Wales. A further 1,000 will follow a language awareness course which provides useful information about the situation of the Welsh language today, history of the language, the Welsh language in education and the benefits of bilingualism.



Cwlwm partners will support the project by liaising with settings to market the courses, help identify suitable locations and assist in the evaluation process. Cwlwm's Welsh Language Co-ordinators will also provide mentoring and after-care support to enable practitioners to gain confidence in their use of Welsh.



The scheme is being delivered on behalf of the National Centre for Learning Welsh by Sbectrwm in collaboration with the University of Wales Trinity Saint Davids, Coleg Cambria and the Cwlwm partnership.



For further details contact -
camau@dysgucymraeg.cymru



4 Why Play and the importance of Playwork Training

Playing is one of the most important parts of children’s lives. It is fundamental to children’s physical, mental, social and emotional health and wellbeing. As part of the United Nations Convention on the Rights of the Child (UNCRC) children have a right to play.

DID YOU KNOW??

- Outdoor play gives children the opportunity to develop resilience, test their physical capabilities, express themselves; and build their self-confidence all of which contributes to their physical and emotional wellbeing.

It is important that we see the value of play both for children and adults; after all it is fun! Look out for your local Play Day on Wednesday 7 August. Play Days are a great opportunity for children to gain new experiences and meet new friends and this years theme is Play Builds Children, which aims to highlight the many ways in which play is beneficial to children and young people.

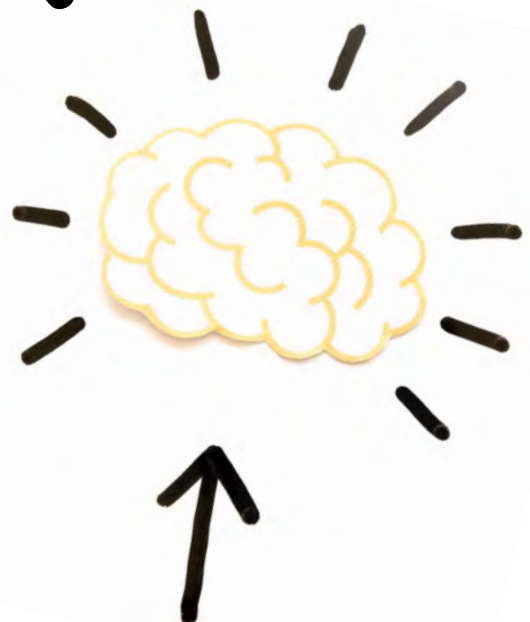
- **Play Builds Friendships** – playing allows children to interact with others, develop relationships, deal with conflict, and learn respect and tolerance.
- **Play Builds Resilience** – playing boosts children’s confidence, creativity, problem-solving skills and perseverance, enabling them to cope with stress and challenges throughout life.
- **Play Builds Health and Well-being** – being active through play helps children physically and emotionally, contributing to their health and happiness.
- **Play Builds Communities** – playing allows children to learn about the world around them, make connections, and develop a sense of identity and belonging.

4 Why Play and the importance of Playwork Training

FUN FACT!

- Play is not just all about the fun! Play actually makes a child's brain bigger and more complex. It encourages the neurons to fire and make new pathways. It is likely that if you have had a lot of play experiences, your brain will look like a pile of sausages, unlike a play deprived brain that is smoother like an old fashioned jelly.

Childcare and Playworkers have an important role in advocating play but so do professionals and the community. It is important that Childcare Practitioners and Playworkers are empowered to nurture play spaces and opportunities and this is why we are delighted to see the return of the Level 5 Diploma in Advanced Playwork to the Apprenticeship Framework, as we know play can be a serious business and can impact children throughout their life. Qualified and skilled Playworkers provide better outcomes for children and young people.



4 Why Play and the importance of Playwork Training

We believe all qualifications are important and have amazing value. Take a look at what some students studying the Level 3 Award in Transition to Playwork (from Early Years) have said about the value of the course:

"The course has been a truly lovely experience. We've had fun learning new skills and had our mind opened and refreshed."



"I found the course educational, engaging and have definitely put it into practice in my setting."

"The course has been fun and informative."

"I have gained knowledge and information which will be of benefit to my setting."

It is clear that the Playwork training has a powerful impact on Playworkers; that can inspire them to develop their own practice; which ultimately leads to positive outcomes for children.



Gofalwn | WeCare
.cymru | .wales

5 WeCare Wales campaign

Launched this spring, the WeCare Wales campaign aims to help attract, recruit and retain more care staff in Wales because we know that over the next 10 years, we will need around 20,000 more care workers.

The WeCare campaign supports the implementation of the Welsh Government's 10 year Childcare, Play and Early Years workforce plan. The plan aims to professionalise the childcare and play sector over a 10 year period and Welsh Government is working in partnership with Social Care Wales on this ambition. The WeCare campaign is the first step in raising awareness of the

5 WeCare Wales campaign

important role childcare practitioners play in supporting young children’s learning and development and the rewarding career opportunities employment in the sector offers.

The campaign also aims to help the public better understand social care and early years and the many potential career opportunities within. It has been shaped by joint working across the sector and feedback from people working in care, as well as members of the public, about their perceptions of working in the sector. The campaign has been well received so far with lots of activity on social media and more than 12,000 people have already visited the WeCare website. This website also holds a growing list of employing organisations across Wales. The video stories



featuring real care workers, not actors, sharing their experiences of working in the sector have also proved popular with over 80,000 views. We have also seen many examples of organisations in Wales using our Stakeholder Toolkit to use the We Care materials at events and jobs fairs.



Gofalwn **WeCare**
.cymru .wales

If you would like to learn more about WeCare Wales please visit www.wecare.wales also if you would like to share your story or access the Stakeholder Toolkit please contact us through the We Care website.





www.cwlwm.org.uk

The Cwlwm partnership consists of the following organisations:



CLYBIAU PLANT CYMRU KIDS' CLUBS

Bridge House, Station Road, Llanishen, Cardiff CF14 5UW
Tel: 029 2074 1000 E-mail: info@clybiauplantcymru.org



EARLY YEARS WALES

Unit 1, The Lofts, 9 Hunter Street, Cardiff CF10 5GX
Tel: 029 2045 1242 E-mail: info@earlyyears.wales



MUDIAD MEITHRIN

Y Ganolfan Integredig, Boulevard de Saint-Brieuc, Aberystwyth, Ceredigion SY23 1PD
Tel: 01970 639639 E-mail: post@meithrin.cymru



NDNA CYMRU

NDNA Cymru, Office 3, Crown House, 11 Well Street, Ruthin, Denbighshire LL15 1AE
Tel: 01824 707823 E-mail: wales@ndna.org.uk



PACEY CYMRU

Room G16, The Maltings, East Tyndall Street, Cardiff CF24 5EZ
Tel: 02920 351407 E-mail: paceycymru@pacey.org.uk